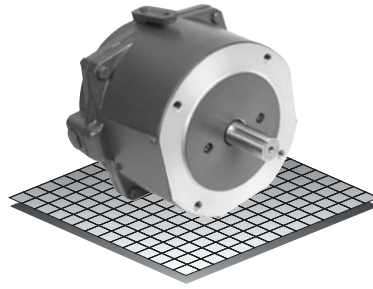


# AC Motor Brakes

# Enclosed Housing

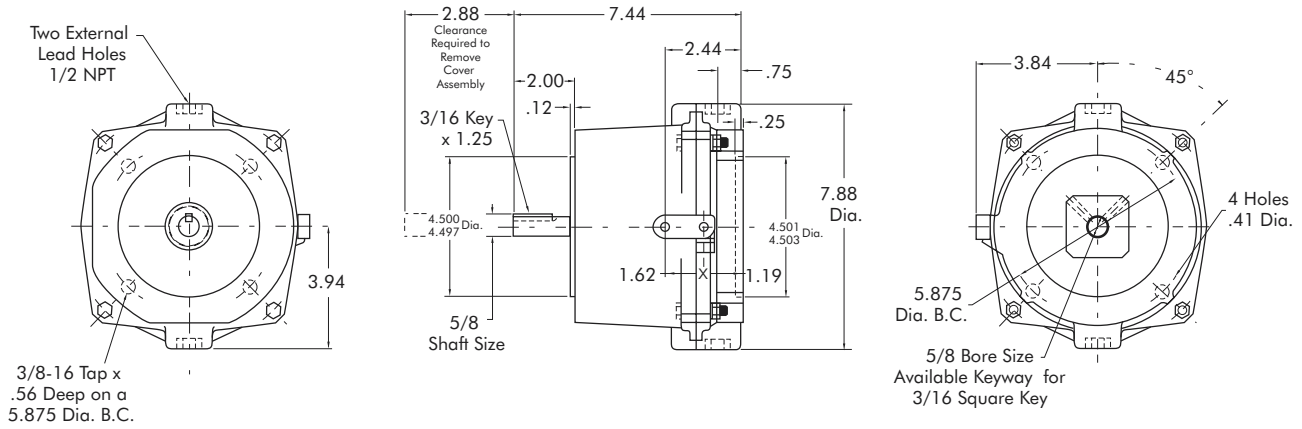
Models

- SSBP-56AC-3
- SSBP-56AC-6



- ▶ Factory Assembled and Tested
- ▶ Manual Release
- ▶ AC Power Off
- ▶ Coupler
- ▶ 56C

## AC Coupler Brake



## Technical Data and Torque (Ft. Lb.)

Model No.	Wt. Lbs.	Static Torque Ft. Lb.	SINGLE PHASE, 60 HZ			THREE PHASE, 60 HZ		
			Voltage	Current Holding Amps	Current Inrush Amps	Voltage	Current Holding Amps	Current Inrush Amps
SSBP-56AC-3	13	3	115/230	.54/.27	4.8/2.4	230/460	.27/.13	2.6/1.3
SSBP-56AC-6	13	6						

	Model No.	
	SSBP-56AC-3	SSBP-56AC-6
115/230 Single Phase, 60HZ	305199-M51A0321	305199-M52A0621
230/460 Three Phase, 60 HZ	305199-M51A0323	305199-M52A0623
Service Parts	All 3 Ft. Lb. Brakes	All 6 Ft. Lb. Brakes
Friction Disc Kit	327201	327202
Single Phase Solenoid	327203	327203
Three Phase Solenoid	327204	327204

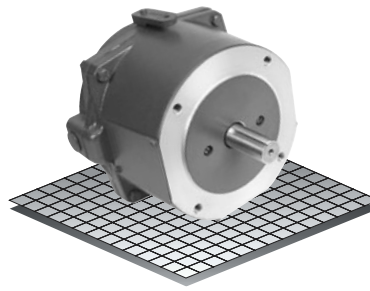
Must be direct-coupled; not recommended for belted or other overhung load applications.

# Enclosed Housing

# AC Motor Brakes

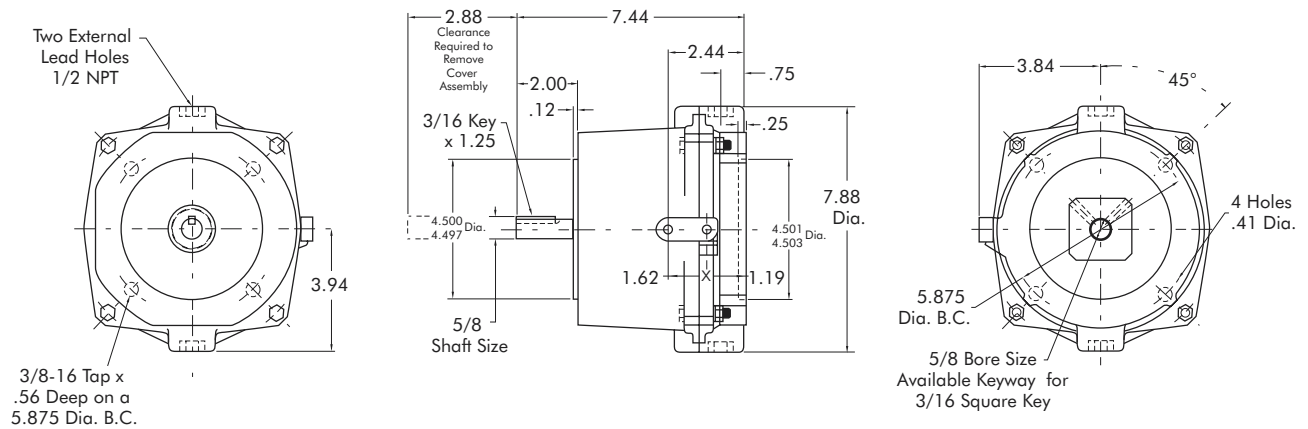
Model

● SSBP-56AC-10



- ▶ Factory Assembled and Tested
- ▶ Manual Release
- ▶ AC Power Off
- ▶ Coupler
- ▶ 56C

## AC Coupler Brake



### Technical Data and Torque (Ft. Lb.)

Model No.	Wt. Lbs.	Static Torque Ft. Lb.	SINGLE PHASE, 60 HZ		
			Voltage	Current Holding Amps	Current Inrush Amps
SSBP-56AC-10	13	10	115/230	.54/.27	4.8/2.4

	Model No.
	SSBP-56AC-10
115/230 Single Phase, 60HZ	305199-M52A0721
Service Parts	
Friction Disc Kit	327202
Single Phase Solenoid	327203

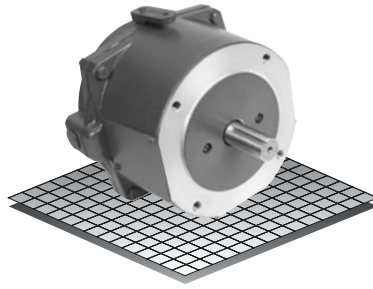
Must be direct-coupled; not recommended for belted or other overhung load applications.

# AC Motor Brakes

# Enclosed Housing

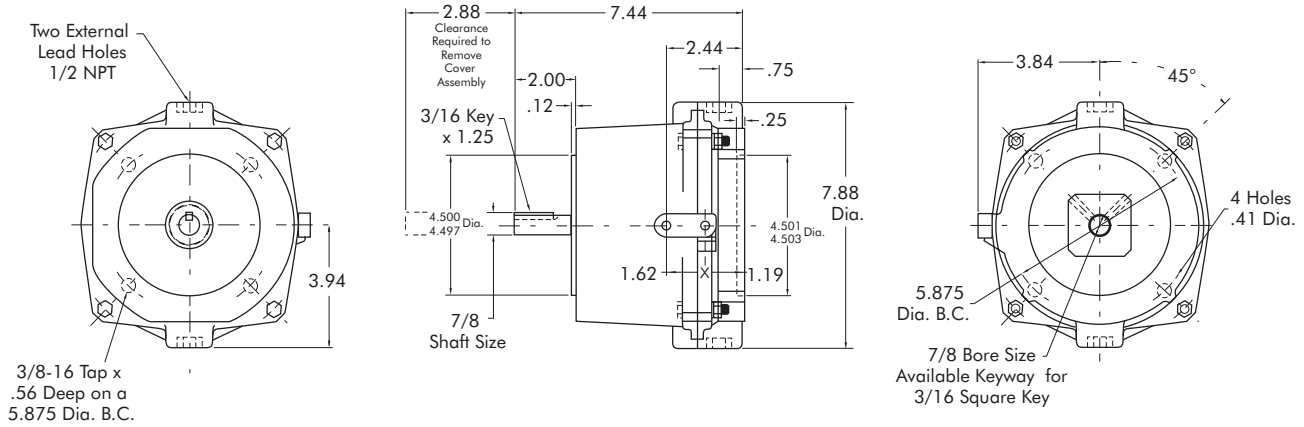
Models

- SSBP-145AC-6
- SSBP-145AC-10



- ▶ Factory Assembled and Tested
- ▶ Manual Release
- ▶ AC Power Off
- ▶ Coupler
- ▶ 145TC

## AC Coupler Brake



### Technical Data and Torque (Ft. Lb.)

Model No.	Wt. Lbs.	Static Torque Ft. Lb.	SINGLE PHASE, 60 HZ		
			Voltage	Current Holding Amps	Current Inrush Amps
SSBP-145AC-6	13	6	115/230	.54/.27	4.8/2.4
SSBP-145AC-10	13	10			

	Model No.	
	SSBP-145AC-6	SSBP-145AC-10
115/230 Single Phase, 60HZ	305199-M52C0621	305199-M52C0721
Service Parts		
Friction Disc Kit	327202	327202
Single Phase Solenoid	327203	327203

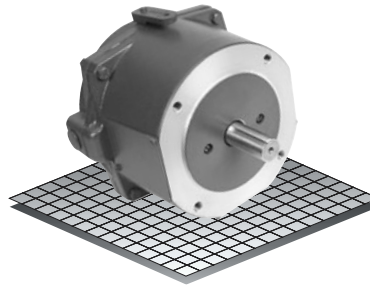
Must be direct-coupled; not recommended for belted or other overhung load applications.

# Enclosed Housing

# AC Motor Brakes

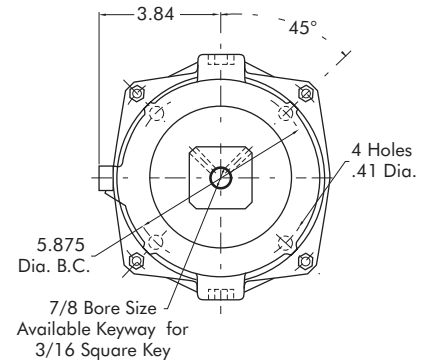
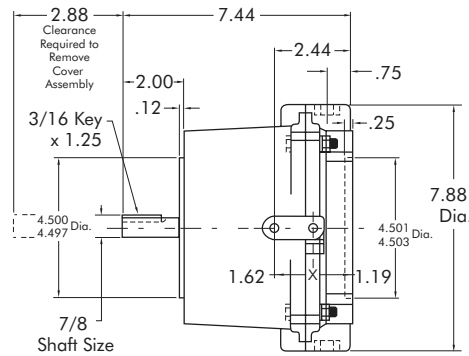
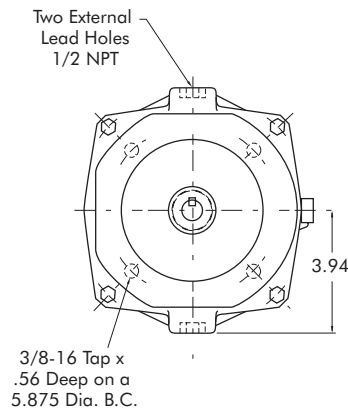
Model

● SSBP-145AC-10



- ▶ Factory Assembled and Tested
- ▶ Manual Release
- ▶ AC Power Off
- ▶ Coupler
- ▶ 145TC

## AC Coupler Brake



### Technical Data and Torque (Ft. Lb.)

Model No.	Wt. Lbs.	Static Torque Ft. Lb.	THREE PHASE, 60 HZ		
			Voltage	Current Holding Amps	Current Inrush Amps
SSBP-145AC-10	13	10	230/460	.27/.13	2.6/1.3

	Model No.
	SSBP-145AC-10
230/460 Three Phase, 60 HZ	305199-M52C0723
Service Parts	All 10 Ft. Lb. Brakes
Friction Disc Kit	327202
Three Phase Solenoid	327204

Must be direct-coupled; not recommended for belted or other overhung load applications.